

Light efficiency:

45 Lumen/Watt

Light quality:

CRI: 88.6

Color temperature:

7291 K

Output: 17062 lm

Peak: 125880 cd

Power: 377 W

PF: 1.0

No photo

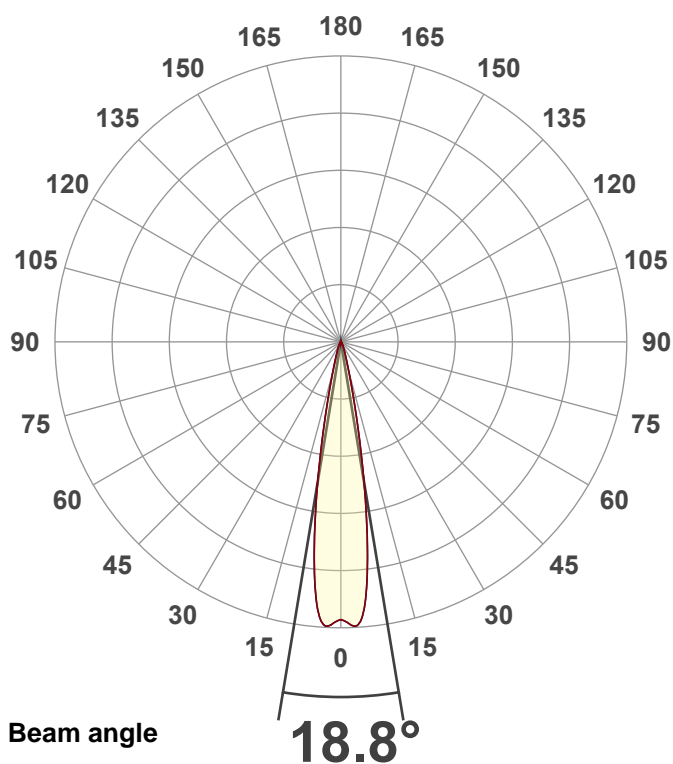
Product name:

40 Hex Panel IP (Full On,7000K)

Item number:

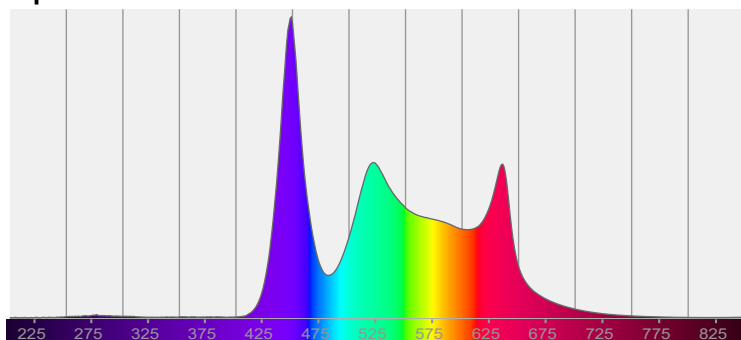
Date and time:

10/9/2025 3:20:52 PM



CIE 1931  
x: 0.303  
y: 0.310

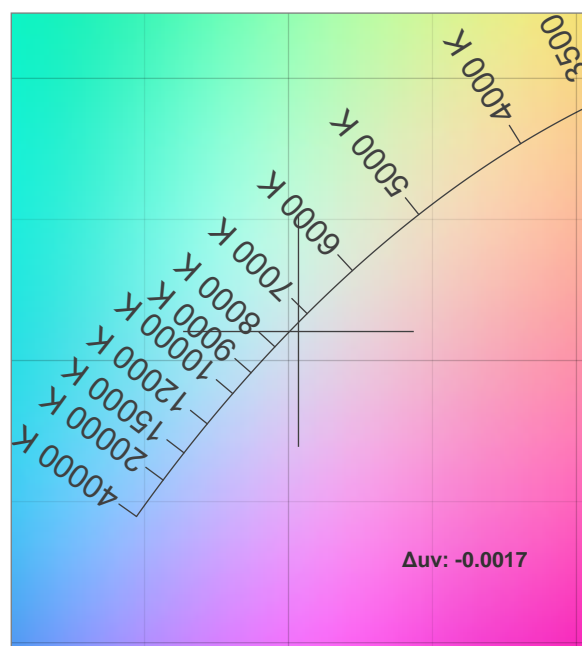
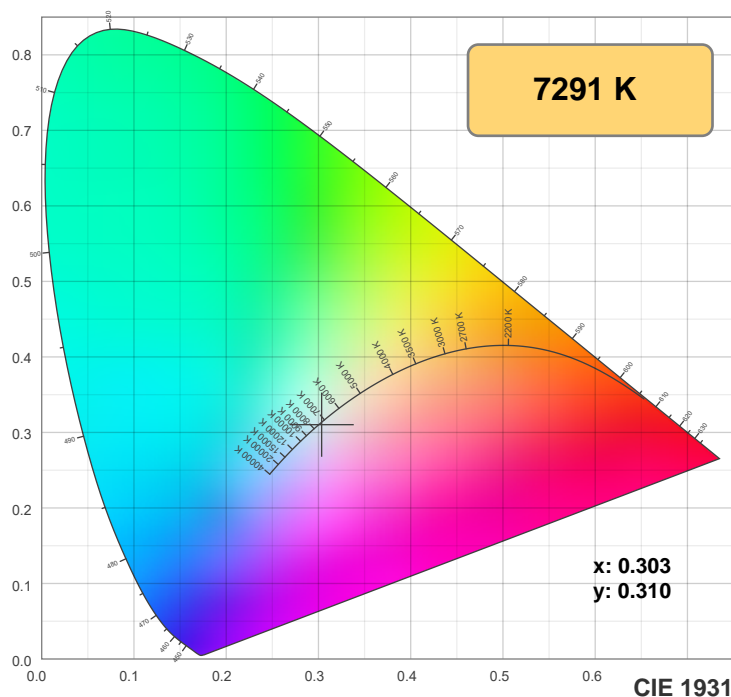
Spectra



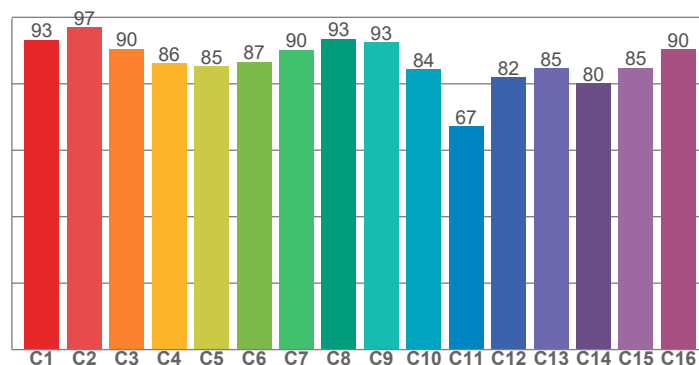
Power

Voltage: 116 V  
Current: 3.25 A  
Frequency: 0 Hz

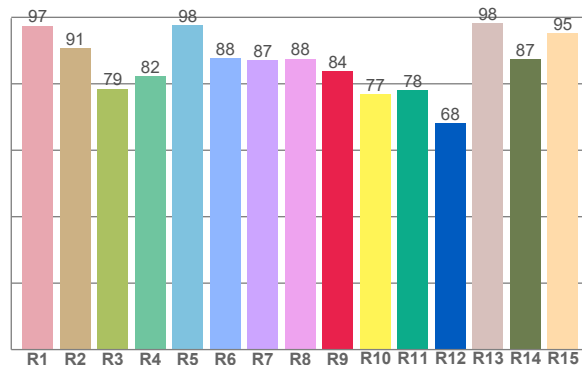
## Color details



**TM-30: 87.2**



**CRI: 88.6 (R1-R8)**



CRI R values, only R1-R8 are used to calculate final CRI value

R1	R2	R3	R4	R5	R6	R7	R8	R9	R10	R11	R12	R13	R14	R15
97.5	90.8	78.5	82.3	97.6	87.7	87.0	87.6	83.7	76.8	78.1	68.2	98.3	87.3	95.3

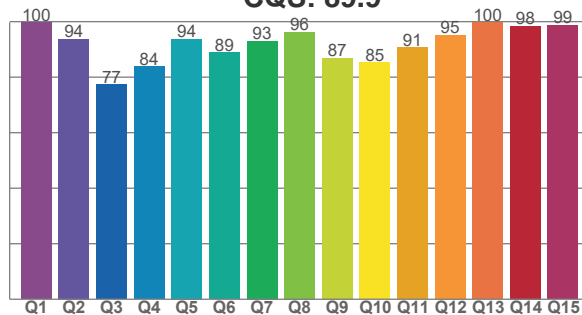
TM30 C values, 16 binned values out of total of 99 C values

C1	C2	C3	C4	C5	C6	C7	C8	C9	C10	C11	C12	C13	C14	C15	C16
93.3	97.0	90.5	86.2	85.2	86.6	90.3	93.5	92.5	84.4	67.3	81.9	84.7	80.1	84.8	90.4

CQS Q values

Q1	Q2	Q3	Q4	Q5	Q6	Q7	Q8	Q9	Q10	Q11	Q12	Q13	Q14	Q15
99.7	93.8	77.4	83.8	93.7	88.9	93.1	96.3	87.0	85.3	90.7	95.2	99.7	98.4	98.7

**CQS: 89.9**



### Color parameters

Color temperature	Color rendering index	Red component	Color fidelity	Color gamut	Color quality scale	Color coordinate cie 1931	Color coordinate cie 1931	Color coordinate	Color coordinate	Color deviation from black body
CCT	CRI	CRI R9	TM30 Rf	TM30 Rg	CQS	x	y	u	v	Δuv
7291 K	88.6	83.7	87.2	106.9	89.9	0.303	0.310	0.198	0.304	-0.0017

# TM-30 details

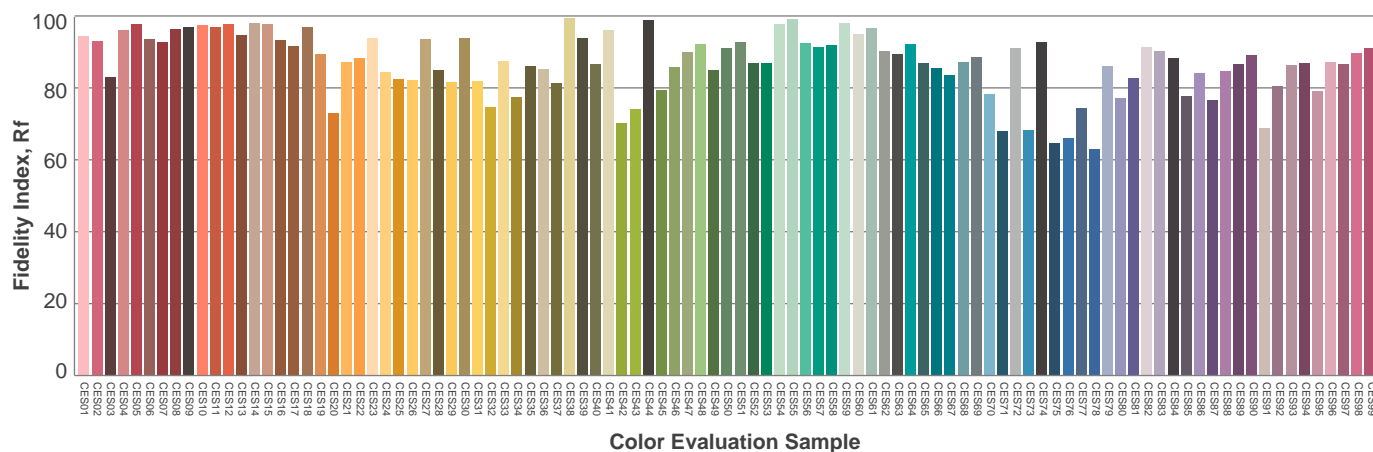
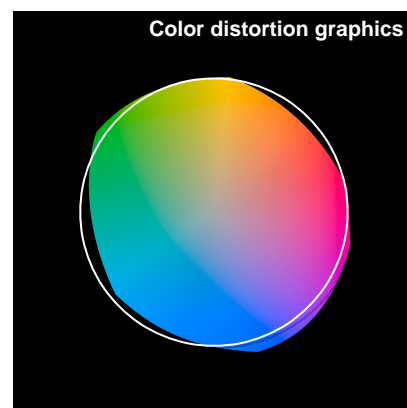
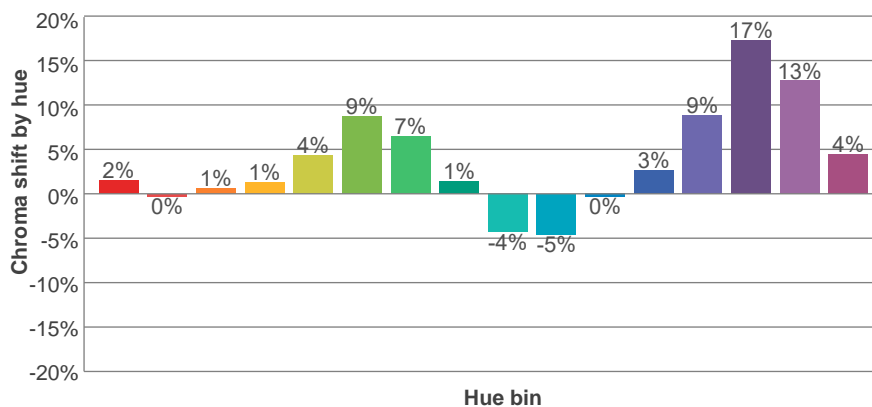
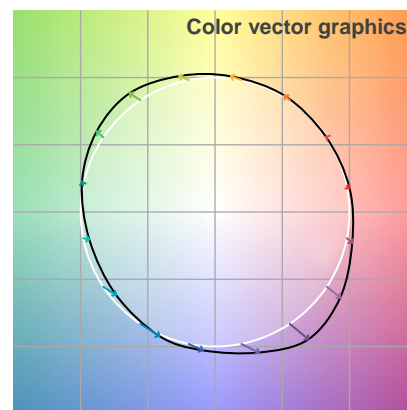
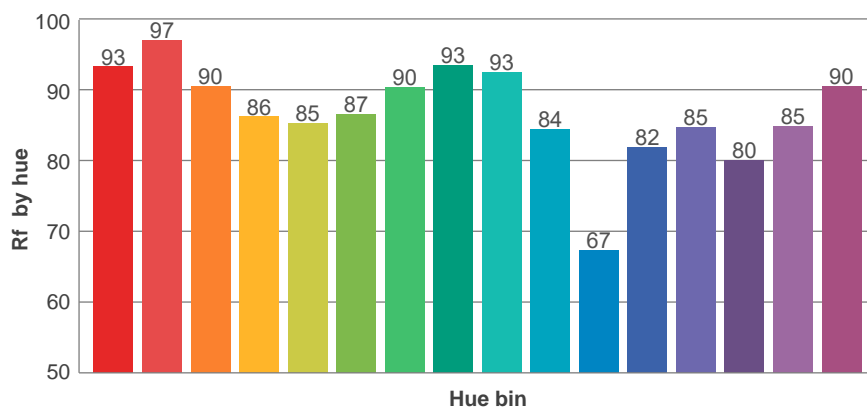
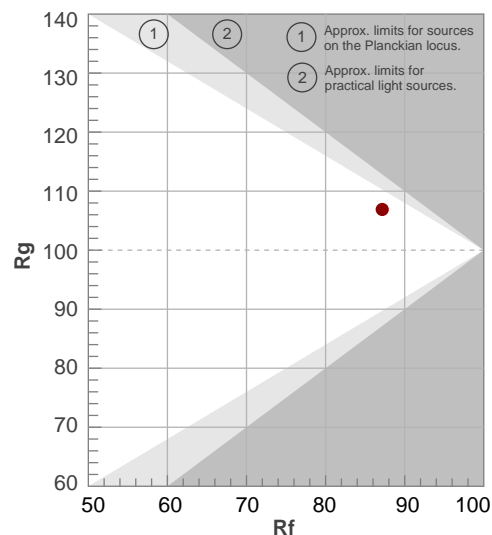
**Rf 87.2**

Fidelity index Rf

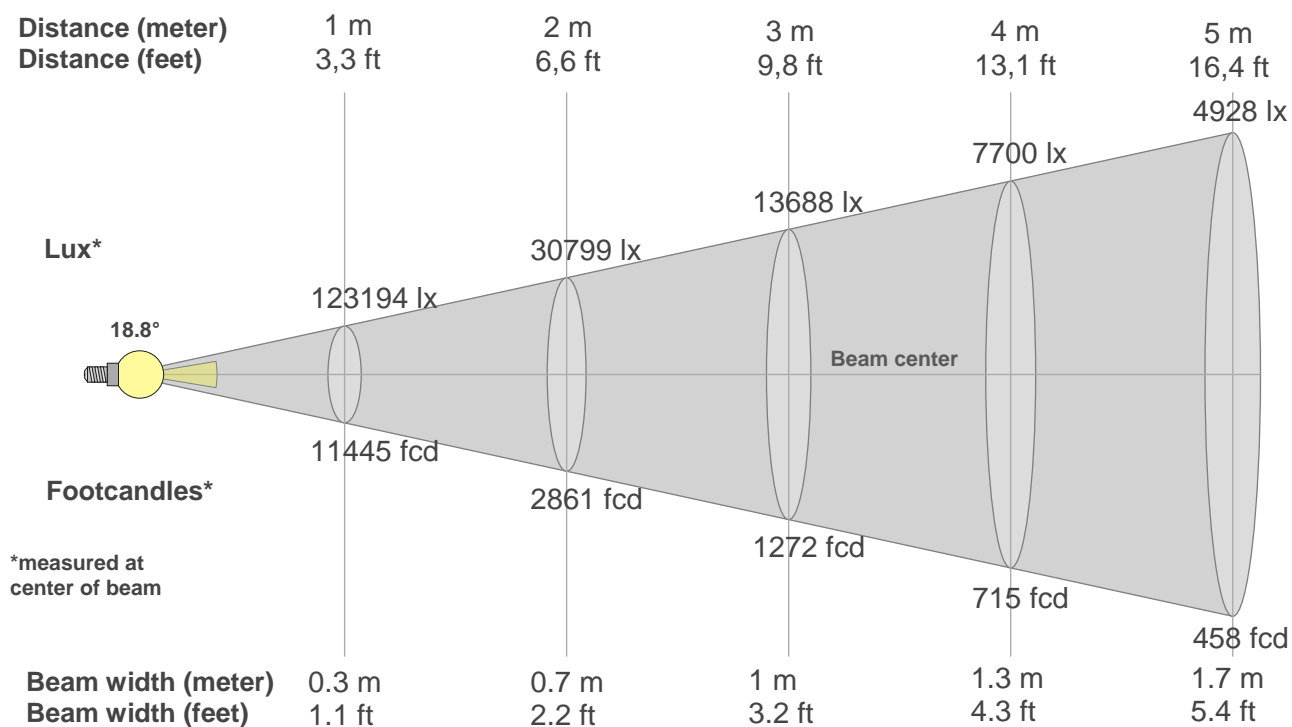
**Rg 106.9**

Gamut index Rg

Hue Bin	R <sub>f</sub>	Shifts (%)	
		Chroma	Hue
1	93	2%	-2%
2	97	0%	1%
3	90	1%	5%
4	86	1%	8%
5	85	4%	6%
6	87	9%	4%
7	90	7%	-1%
8	93	1%	-3%
9	93	-4%	2%
10	84	-5%	10%
11	67	0%	17%
12	82	3%	11%
13	85	9%	11%
14	80	17%	5%
15	85	13%	-1%
16	90	4%	-3%



## Beam details



### Beam intensities from 1-20m

1m	2m	3m	4m	5m	6m	7m	8m	9m	10m	11m	12m	13m	14m	15m	16m	17m	18m	19m	20m
3.3ft	6.6ft	9.8ft	13.1ft	16.4ft	19.7ft	23ft	26.2ft	29.5ft	32.8ft	36.1ft	39.4ft	42.7ft	45.9ft	49.2ft	52.5ft	55.8ft	59.1ft	62.3ft	65.6ft
123194lx	30799lx	13688lx	7700lx	4928lx	3422lx	2514lx	1925lx	1521lx	1232lx	1018lx	856lx	729lx	629lx	548lx	481lx	426lx	380lx	341lx	308lx
11445.1 fcd	2861.3 fcd	1271.7 fcd	715.3 fcd	457.8 fcd	317.9 fcd	233.6 fcd	178.8 fcd	141.3 fcd	114.5 fcd	94.6 fcd	79.5 fcd	67.7 fcd	58.4 fcd	50.9 fcd	44.7 fcd	39.6 fcd	35.3 fcd	31.7 fcd	28.6 fcd

### Intensities in 0° c-plane

0°	1°	2°	3°	4°	5°	6°	7°	8°	9°	10°	11°	12°	13°	14°	15°	16°	17°	18°	19°
123k	124k	125k	126k	124k	118k	109k	97k	83k	68k	54k	42k	32k	24k	18k	14k	11k	9k	7k	6k
100%	101%	102%	102%	100%	96%	88%	78%	67%	55%	44%	34%	26%	19%	14%	11%	9%	7%	6%	5%

### Intensities in 90° c-plane

0°	1°	2°	3°	4°	5°	6°	7°	8°	9°	10°	11°	12°	13°	14°	15°	16°	17°	18°	19°
123k	124k	125k	126k	124k	118k	109k	97k	83k	68k	54k	42k	32k	24k	18k	14k	11k	9k	7k	6k
100%	101%	102%	102%	100%	96%	88%	78%	67%	55%	44%	34%	26%	19%	14%	11%	9%	7%	6%	5%

### Intensities in 180° c-plane

0°	1°	2°	3°	4°	5°	6°	7°	8°	9°	10°	11°	12°	13°	14°	15°	16°	17°	18°	19°
123k	124k	125k	126k	124k	118k	109k	97k	83k	68k	54k	42k	32k	24k	18k	14k	11k	9k	7k	6k
100%	101%	102%	102%	100%	96%	88%	78%	67%	55%	44%	34%	26%	19%	14%	11%	9%	7%	6%	5%

### Intensities in 270° c-plane

0°	1°	2°	3°	4°	5°	6°	7°	8°	9°	10°	11°	12°	13°	14°	15°	16°	17°	18°	19°
123k	124k	125k	126k	124k	118k	109k	97k	83k	68k	54k	42k	32k	24k	18k	14k	11k	9k	7k	6k
100%	101%	102%	102%	100%	96%	88%	78%	67%	55%	44%	34%	26%	19%	14%	11%	9%	7%	6%	5%

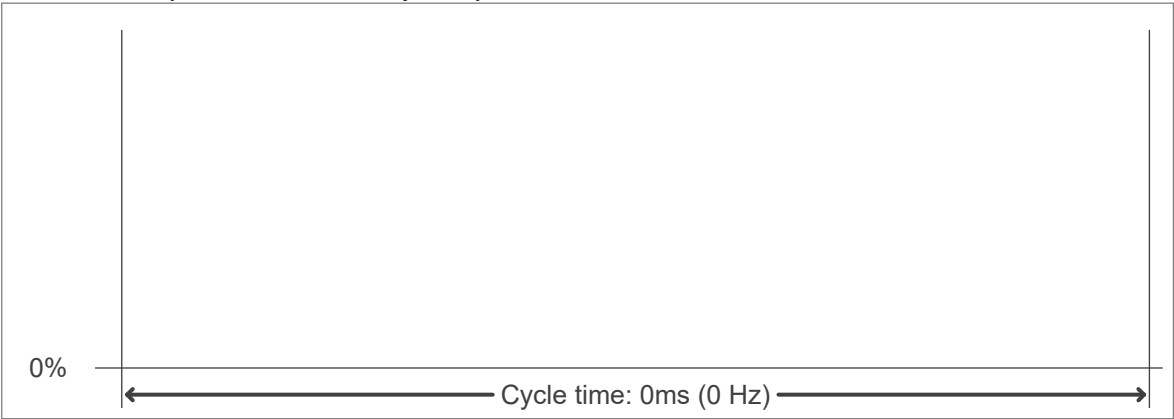
Beam angle 50%	Field angle 10%	Cutoff angle 2,5%	Intensity ratio in 120° cone	Intensity ratio in 90° cone
18.8°	30.6°	47.2°	96.2%	93.2%



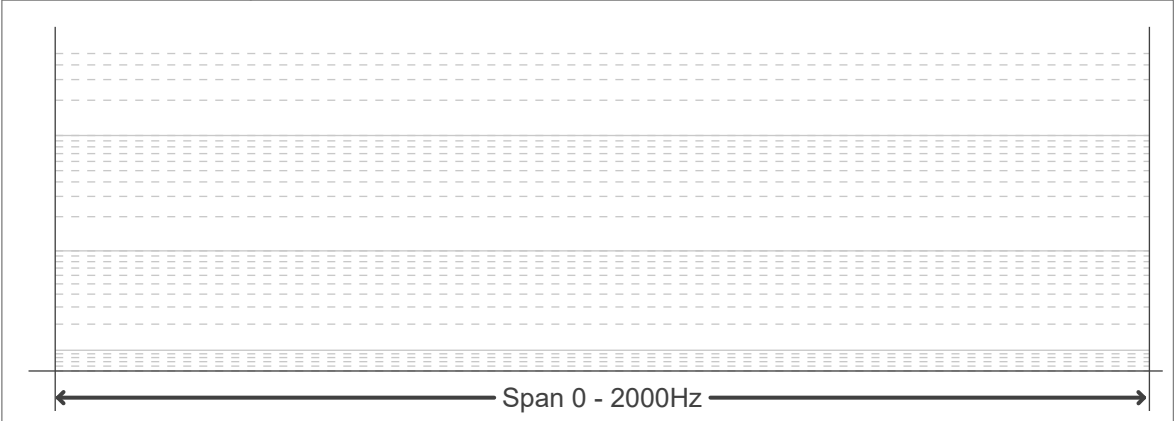
Flicker curve (complete sampled flicker signal)



Flicker frame (frame of one flicker period)



Flicker FFT (frequency scope of flicker curve)



Flicker results:

Flicker frequency:		n/a Hz	
Flicker index:	n/a	JA8/10 40Hz	n/a %
Flicker percentage:	n/a %	JA8/10 90Hz	n/a %
SVM: (Visual flicker)	n/a	JA8/10 200Hz	n/a %
PstLM	n/a	JA8/10 400Hz	n/a %
Mp	n/a	JA8/10 1000Hz	n/a %

Flicker conditions:

Sample rate:	n/a samples/second
--------------	--------------------